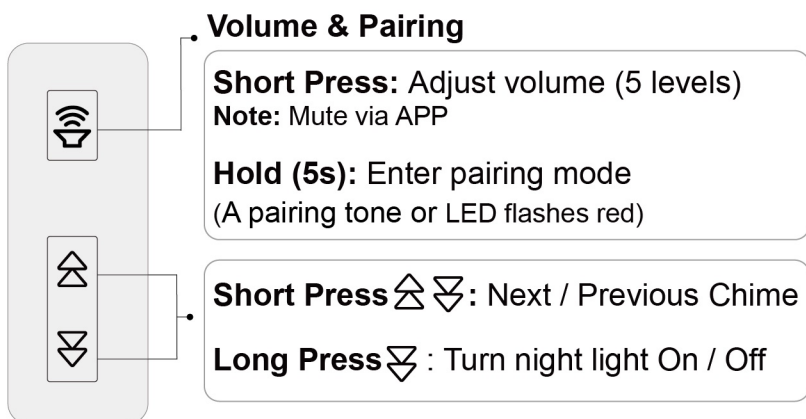


QUICK START GUIDE

For Nest Doorbell



Hardware Overview



Preparation Before Setup

1. Update your Google Home and SmartLife apps.
2. Ensure your Nest Doorbell is set up in Google Home first (*don't skip this!*).
3. Download the SmartLife App and create an account:



SmartLife - Smart Living

Note: Developed by Tuya Inc.
(Create an account after DL)




Scan to DL

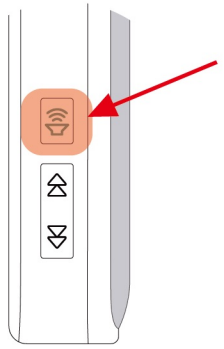
Setup Overview

- ✓ Step 1 **Set up in SmartLife**
- ✓ Step 2 **Create a Google Routine**

Step 1 Set up in SmartLife & Link to Google

1. Enter Pairing Mode

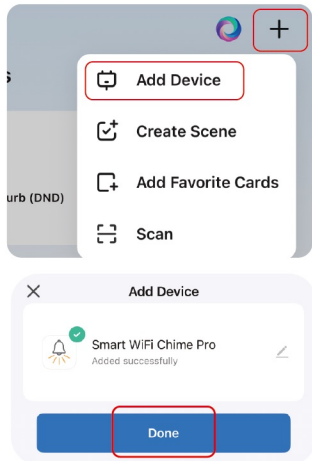
- Plug in the chime and enable **Bluetooth** on your phone.
- Press and hold the **Volume** button  Release when you **hear a pairing tone** or the **indicator light flashes red**.



2. Add Device in SmartLife

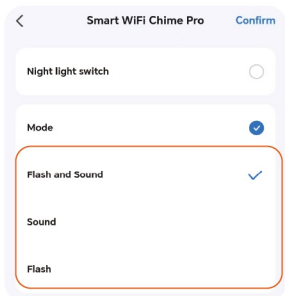
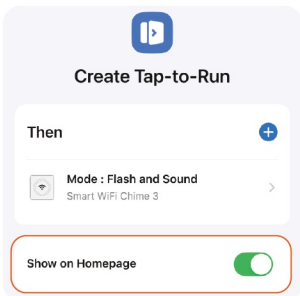
Open the **SmartLife** app

- Tap **"+"** (top right)
- Tap **Add Device**
- Select **Smart WiFi Chime Pro**
- Enter your Wi-Fi password
- Tap **Done**



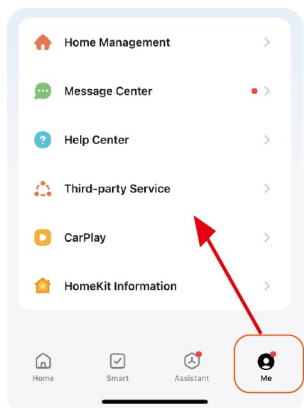
3. Set Up "Tap-to-Run" Shortcut

- Tap **"+"** (top right) → **Create Scene** → **Launch Tap-to-Run**
 - Tap **"+"** to add a task
 - Tap **Device** → **Select a single device** → **Select your chime**.
 - Set **Mode** to **"Flash and Sound"** and tap **Confirm**.
- (💡 Tip: Select **"Flash"** for a silent, visual-only alert.)
- Tap **Save** and **Name** the shortcut (e.g., **"Ring the Chime"**) .



4. Connect to Google Home (App-to-App linking)

- Tap the **"Me"** tab in the bottom menu of the **SmartLife** app.
- Tap **Third-Party Service**
- Select **Google**
- Tap **Link to Google**
- Follow the on-screen prompts.
No passwords needed!



1. Open the Google Home app

- Tap "+" (top right)
- Select **Automation**
- Tap the **menu (☰)** in top right
- (If your screen shows it)

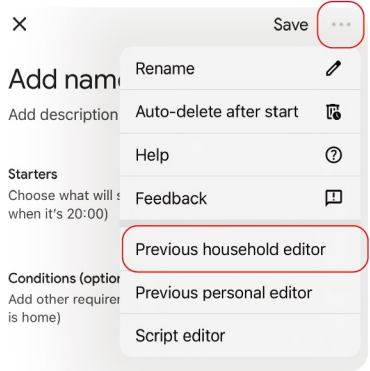
Select **Previous household editor**

Note:

Google Home updates frequently.

If you don't see the **menu (☰)**,

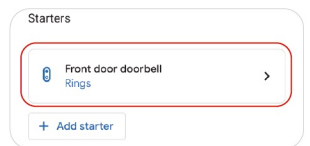
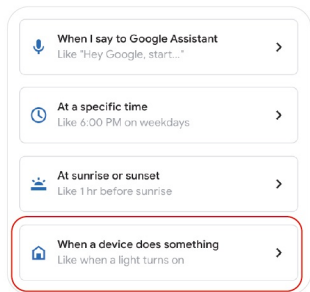
simply select **Household Routine** and proceed to the next step.



2. Add Starters

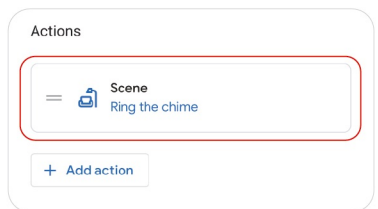
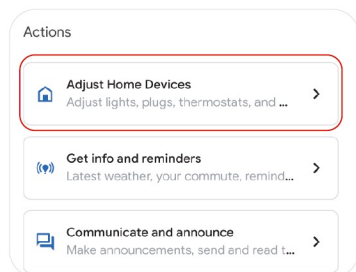
- Tap **+ Add starter**
- Select **When a device does something**
- Choose **your Nest doorbell**
- Select **Doorbell rings**
- Tap **Add starter**.

Note: You can add optional conditions here, like specific times or days.



3. Add Actions

- Tap **+ Add action**
- Select **Adjust Home Devices**
- Choose **Add scenes**
- Select **the scene** you created in SmartLife (e.g., "Ring the Chime")
- Tap **Add action** to confirm.



4. Save and Test

- Tap the **pencil icon** at the top to name your Routine (e.g., "Doorbell Chime").
- Tap **Save** in the bottom right corner.



Nest setup is complete!!

Go to your front door and press your doorbell. Your new Smart Wi-Fi Chime should now ring simultaneously!

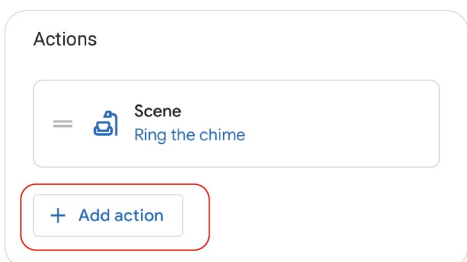
Expand Your Coverage

Need a chime in the garage or upstairs?

You can add up to 99+ chimes to a single doorbell.



1. Ensure your first Chime is fully set up and working.
2. Add the new Chime to the SmartLife, then **Create a new Scene**.
3. Open the **Google Home** and find your existing Doorbell Routine.
4. Scroll down to **Actions**, tap **+ Add action**, and select the **new Scene** you just created. Save the Routine.



💡 Pro Tip: Custom Melodies

You can set a different melody for each Chime.

This way, you'll know exactly which room is ringing!

App Control Guide

