

# QUICK START GUIDE

## For Ring & Blink Doorbell



### Hardware Overview

**Volume & Pairing**

**Short Press:** Adjust volume (5 levels)  
**Note:** Mute via APP

**Hold (5s):** Enter pairing mode  
(A pairing tone or LED flashes red)

**Short Press** : Next / Previous Chime

**Long Press** : Turn night light On / Off

### Preparation Before Setup

1. Confirm your **Ring** or **Blink** doorbell is fully functional in its original app (**don't skip this!**).



Blink

or



Ring

2. Download two Apps and create accounts



(1) SmartLife -Smart Living

**Note:** Developed by Tuya Inc.  
Please ensure the icon matches



Scan to DL



(2) Amazon Alexa

**Note:** No Echo speaker required.  
The free app alone is all you need.


### Setup Overview

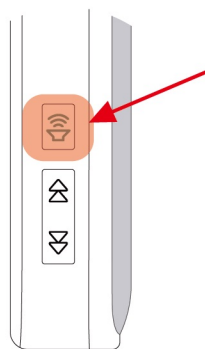
- ✔ Step 1: **Set up in SmartLife**
- ✔ Step 2: **Link Your Video Doorbell to Alexa**
- ✔ Step 3: **Create an Alexa Routine**

**IF:** Doorbell Pressed → **THEN:** Chime Sounds

# Step 1 Set up in SmartLife & Link to Alexa

## 1. Enter Pairing Mode

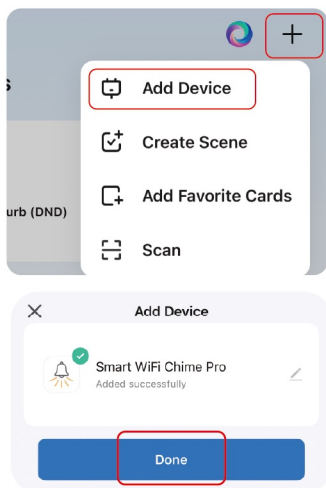
- Plug in the chime and enable **Bluetooth** on your phone.
- Press and hold the **Volume** button  Release when you **hear a pairing tone** or the **indicator light flashes red**.



## 2. Add Device in SmartLife

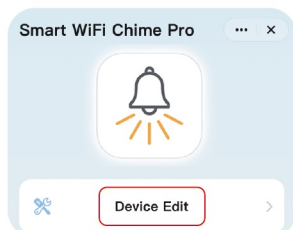
Open the **SmartLife** app

- Tap **"+"** (top right)
- Tap **Add Device**
- Select **Smart WiFi Chime Pro**
- Enter your Wi-Fi password
- Tap **Done**



## 3. Rename Your Chime

- Tap your added **chime**
- Tap **Device Edit** (bottom left)
- **Rename**

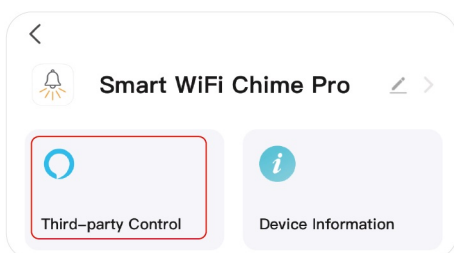


### **Recommended Name**

Rename it to **"Indoor Chime"**  
Avoid using "Doorbell" (may confuse Alexa)

## 4. Connect to Alexa *(App-to-App linking)*

- Tap the **Settings icon** (⋮) in top right
- Tap **Third-party Control**
- Select **Alexa > Link to Alexa**
- Follow prompts to finish (No passwords needed!).  
You will see a **"Linked"** status on the screen.

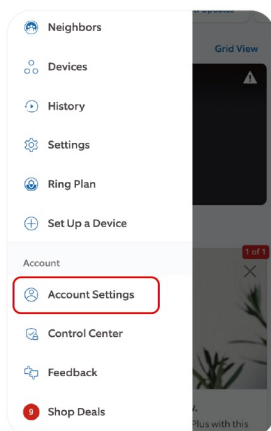


## Step 2 Link Your Doorbell to Alexa

### ring For Ring Doorbell

Open your **Ring** app:

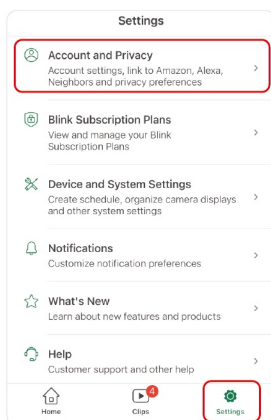
1. Tap **Menu** ☰ in the top-left corner
2. Tap **Account Settings**
3. Select **Ring Alexa Skill**
4. Tap **TURN ON RING SKILL**
5. Tap **AGREE AND CONTINUE**
6. Tap the blue **LINK** button.



### b For Blink Doorbell

Open your **Blink** app:

1. Tap **Settings**
2. Tap **Account and Privacy**
3. Tap **Alexa** (status shows "Unlinked")
4. Tap **Link Alexa, Agree & Continue**
5. The Alexa linking screen will pop up.  
Tap the blue **LINK** button.



## Step 3 Create an Alexa Routine (Final Step!)

Open your **Alexa** app

### (1) Start a New Routine

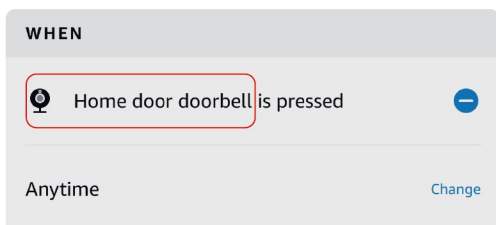
Tap **More** (☰) > **Routines** > Tap **+** (top right)

### (2) When This Happens: ("My Ring / Blink Doorbell" is pressed.)

Tap **+** Add an event > **Smart Home**  
> Select **your Ring / Blink video doorbell**  
> Tap **Doorbell** > Tap **Save**

### ⚠ Heads up:

Make sure you don't accidentally select the chime!




💡 **Pro Tip:** Tap "Anytime" to change it to a specific schedule, like "Active only during the day."

### (3) Alexa Will: (Play sound on "Indoor Chime".)

Tap  Add an action

> Tap  **Smart Home** >  **Doorbells**

> Select  **the Chime** you named in SmartLife (e.g., "Indoor Chime ")

 Do NOT select your video doorbell here!

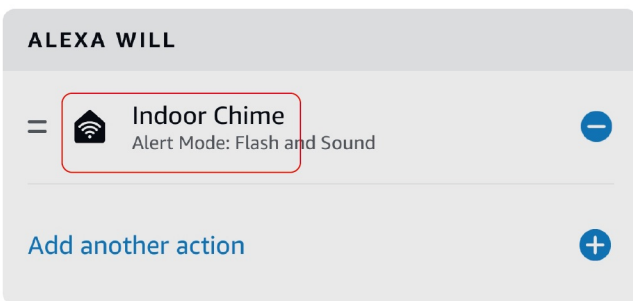
> Tap **Alert Mode**, select **Flash and Sound**.

( **Tip: For silent mode, select "Flash Only".**)

> Tap **Next** in the top right corner

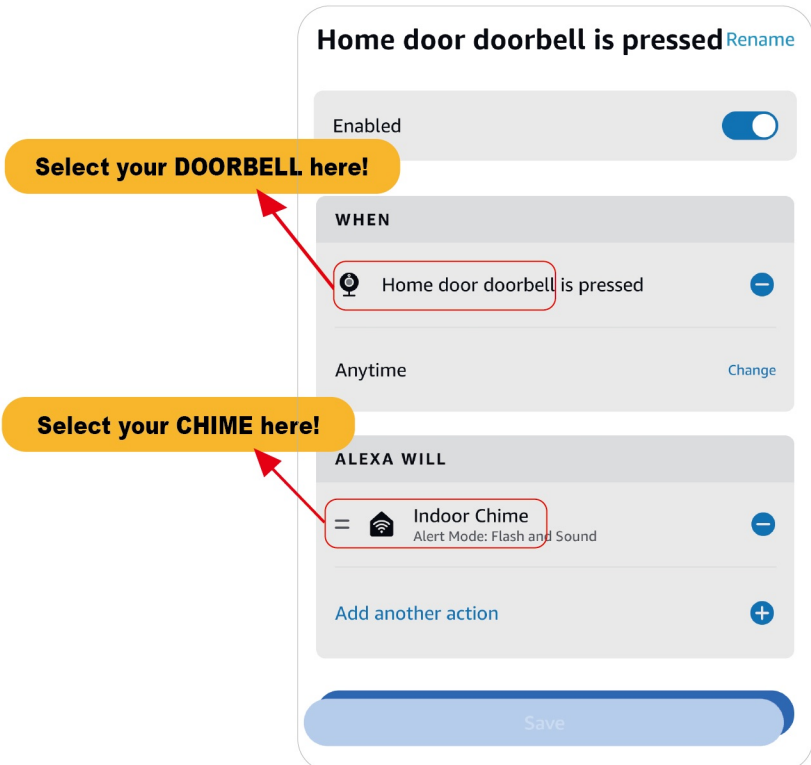
 **Note:**

Make sure to select the **Chime** here, NOT your doorbell



### **Final Check Before Saving!**

- Is the "**WHEN**" set to your Video Doorbell?
- Is the "**ALEXA WILL**" set to your Indoor Chime?



### (4) Save & Test

Tap "**Save**" at the bottom.

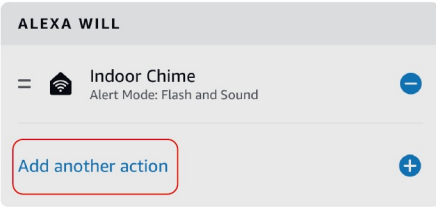
 Setup is complete! Go press your doorbell to test it.

# Expand Your Coverage

Need a chime in the garage or upstairs?  
You can add up to 99+ chimes to a single doorbell.



1. Ensure your first Chime is fully set up and working.
2. Add the New Chime to the **SmartLife** app.  
**⚠ Important:** Give it a unique name (e.g., "Upstairs Chime") so Alexa doesn't get confused.
3. Open your existing **Routine** in the **Alexa** app.  
Under the "**ALEXA WILL**" section, tap **+ Add another action** to include the new Chime.



## 💡 Pro Tip: Custom Melodies

You can set a different melody for each Chime.  
This way, you'll know exactly which room is ringing!

# App Control Guide

Smart WiFi Chime Pro

- ① **Device Edit:** Rename your device.
- ② **Night Light:** Toggle ON/OFF and select from 3 brightness levels.
- ③ **Melody Selection:** Choose from 32 HD melodies.
- ④ **Volume Control:** Select from 4 volume levels.